

JVC

SCHEMATIC DIAGRAMS

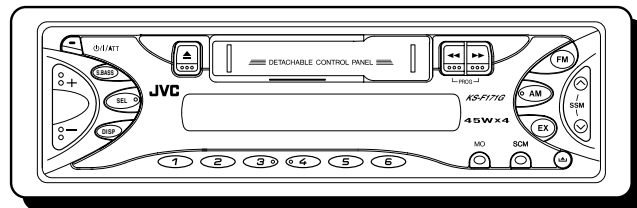
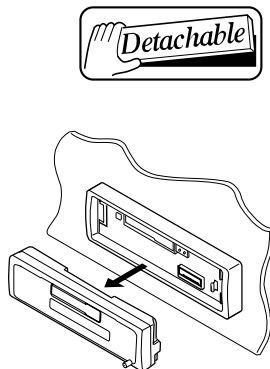
RADIO KASET

KS-F171G

CD-ROM No.SML200309

Area Suffix


UN -----Asean



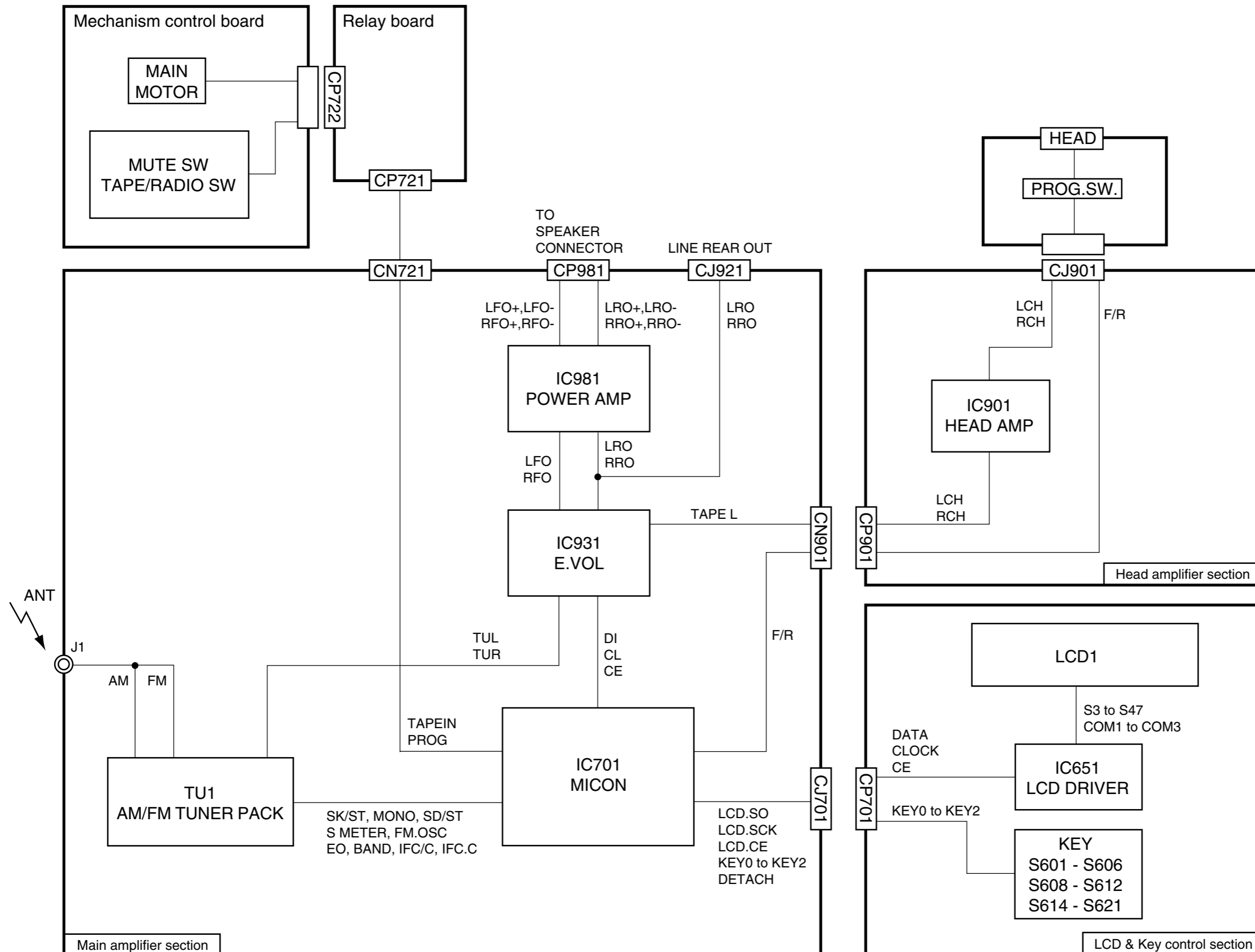
Contents

Block diagram	2-1
Standard schematic diagrams	2-2
Printed circuit boards	2-5,6

Safety precaution

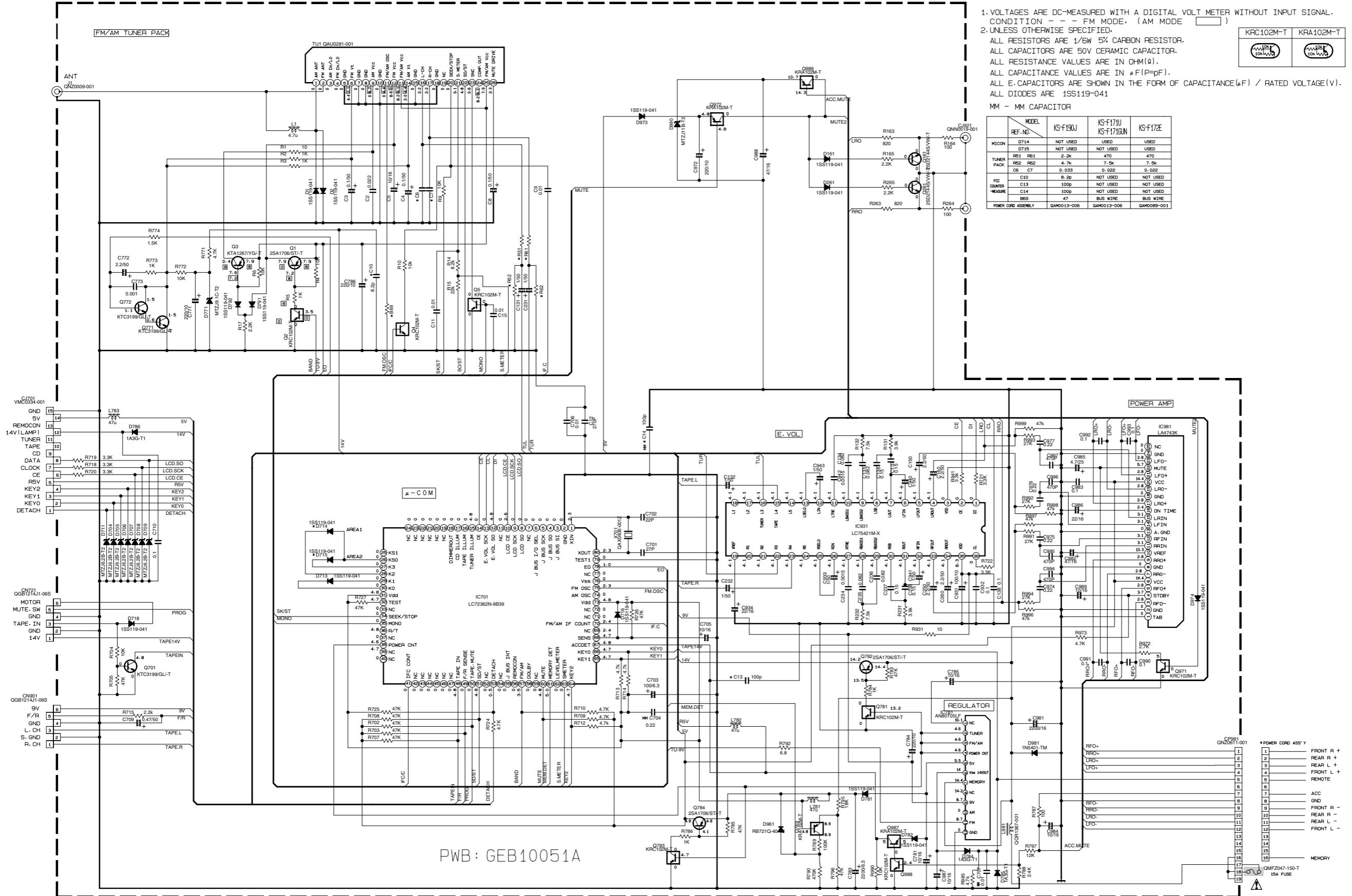
 **CAUTION** Burrs formed during molding may be left over on some parts of the chassis. Therefore, pay attention to such burrs in the case of performing repair of this system.

Block diagram



Standard schematic diagrams

■ Main amplifier section



NOTES

- VOLTAGES ARE DC-MEASURED WITH A DIGITAL VOLT METER WITHOUT INPUT SIGNAL. CONDITION - - - FM MODE. (AM MODE)
- UNLESS OTHERWISE SPECIFIED.

ALL RESISTORS ARE 1/6W 5% CARBON RESISTOR.
 ALL CAPACITORS ARE 50V CERAMIC CAPACITOR.
 ALL RESISTANCE VALUES ARE IN OHM(Ω).
 ALL CAPACITANCE VALUES ARE IN μF(P=pF).
 ALL E-CAPACITORS ARE SHOWN IN THE FORM OF CAPACITANCE(μF) / RATED VOLTAGE(V).
 ALL DIODES ARE 1SS119-041
 MM - MM CAPACITOR

	KRC102M-T	KRA102M-T

MODEL	KS-F190J	KS-F171U KS-F1716UN	KS-F172E
REF. NO.			
MICRON	D714	NOT USED	USED
	D715	NOT USED	USED
TUNER PACK	R51 R61	2.2K	470
	R52 R62	4.7K	7.5K
	C6 C7	0.033	0.022
FCC COMPAT	C10	8.2p	NOT USED
	C13	100p	NOT USED
HEADFE	C14	100p	NOT USED
	B69	47	BLU WIRE
POWER CORD ASSEMBLY	GAM0013-006	GAM0013-006	GAM0089-001

PWB: GEB10051A

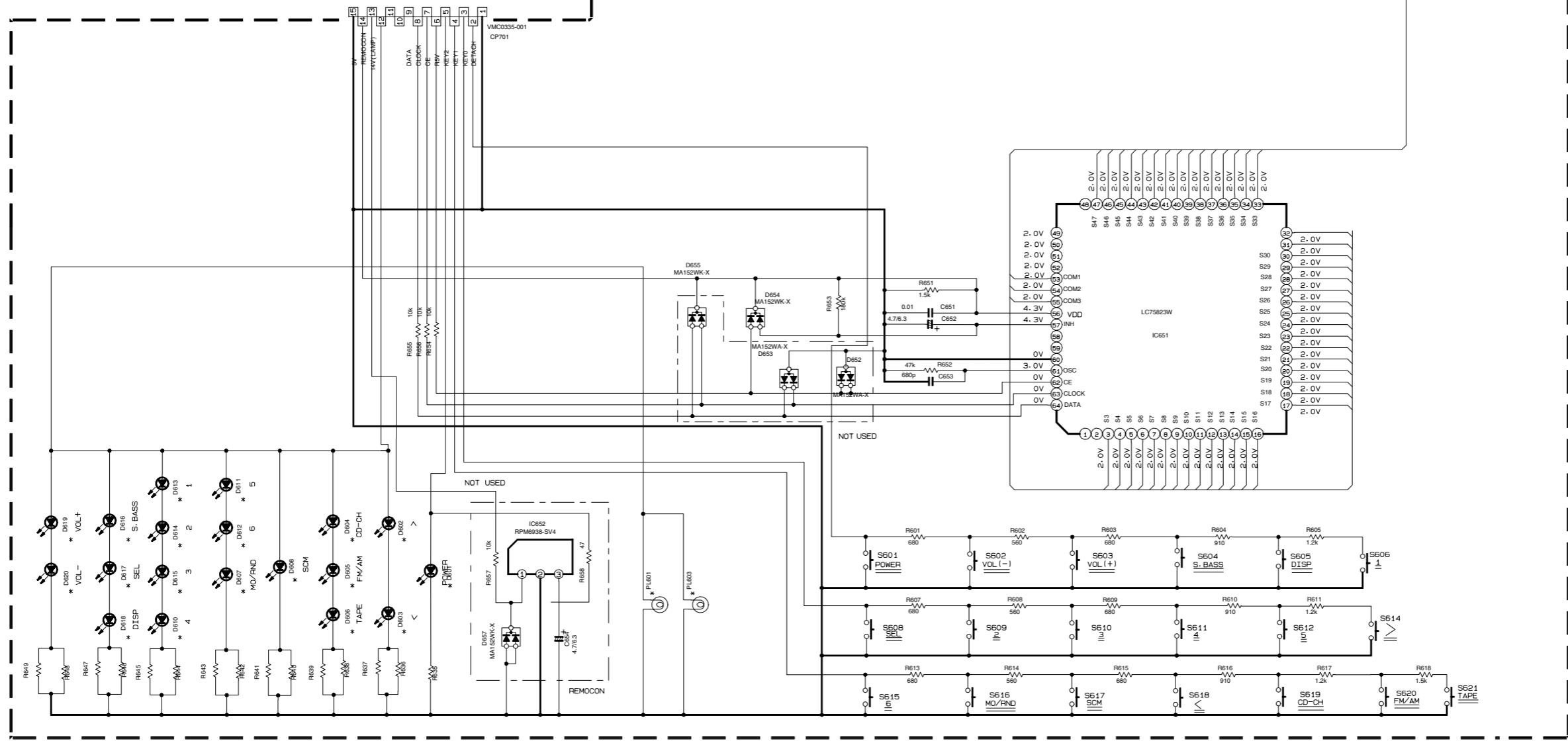
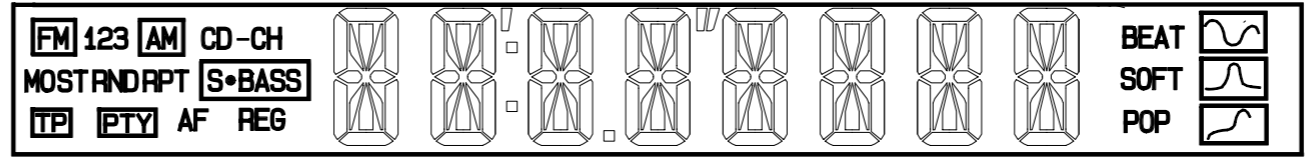
⚠ Parts are safety assurance parts.
 When replacing those parts make sure to use the specified one.

LCD & Key control section

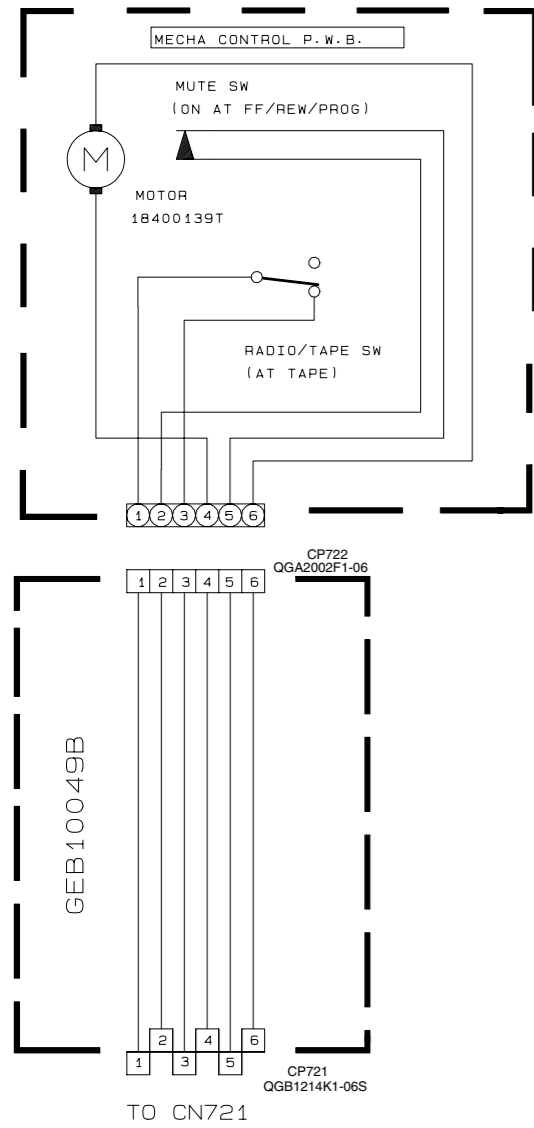
	KS-F190J	KS-F172E	KS-F171U KS-F171GUN
R635	820	820	820
R636	1k	820	820
R637	1k	1.5k	1.5k
R638	820	820	820
R639	820	820	820
R640	1.2k	1.5k	1k
R641	1.2k	1.5k	1.8k
R642	820	820	820
R643	820	820	820
R644	620	560	560
R645	620	620	620
R646	820	820	820
R647	820	820	820
R648	1k	820	820
R649	1k	1.5k	1.5k

	D601	D60B	OTHER	PL601 PL603
KS-F190J	SML-310LT/MN/-X	LT1F67AF-W	SML-310VT/JK/-X	QLL0151-001
KS-F171U KS-F171GUN	SML-310LT/MN/-X	LNJ308GB1/1-3/X	LNJ308GB1/1-3/X	QLL0151-001
KS-F172E	SML-310LT/MN/-X	SML-310VT/JK/-X	LNJ308GB1/1-3/X	QLL0152-001

NOTES
 1. VOLTAGES ARE DC-MEASURED WITH A DIGITAL VOLT METER WITHOUT INPUT SIGNAL.
 CONDITION --- FM MODE
 2. UNLESS OTHERWISE SPECIFIED,
 ALL RESISTORS ARE 1/4W 5% CARBON RESISTOR OR 1/4W 1/10W 5% METAL GLAZE RESISTOR.
 ALL CAPACITORS ARE 50V CERAMIC CAPACITOR.
 ALL RESISTANCE VALUES ARE IN OHM (Ω).
 ALL CAPACITANCE VALUES ARE IN μF (μF).
 ALL E-CAPACITORS ARE SHOWN IN THE FORM OF CAPACITANCE(μF) / RATED VOLTAGE(V).

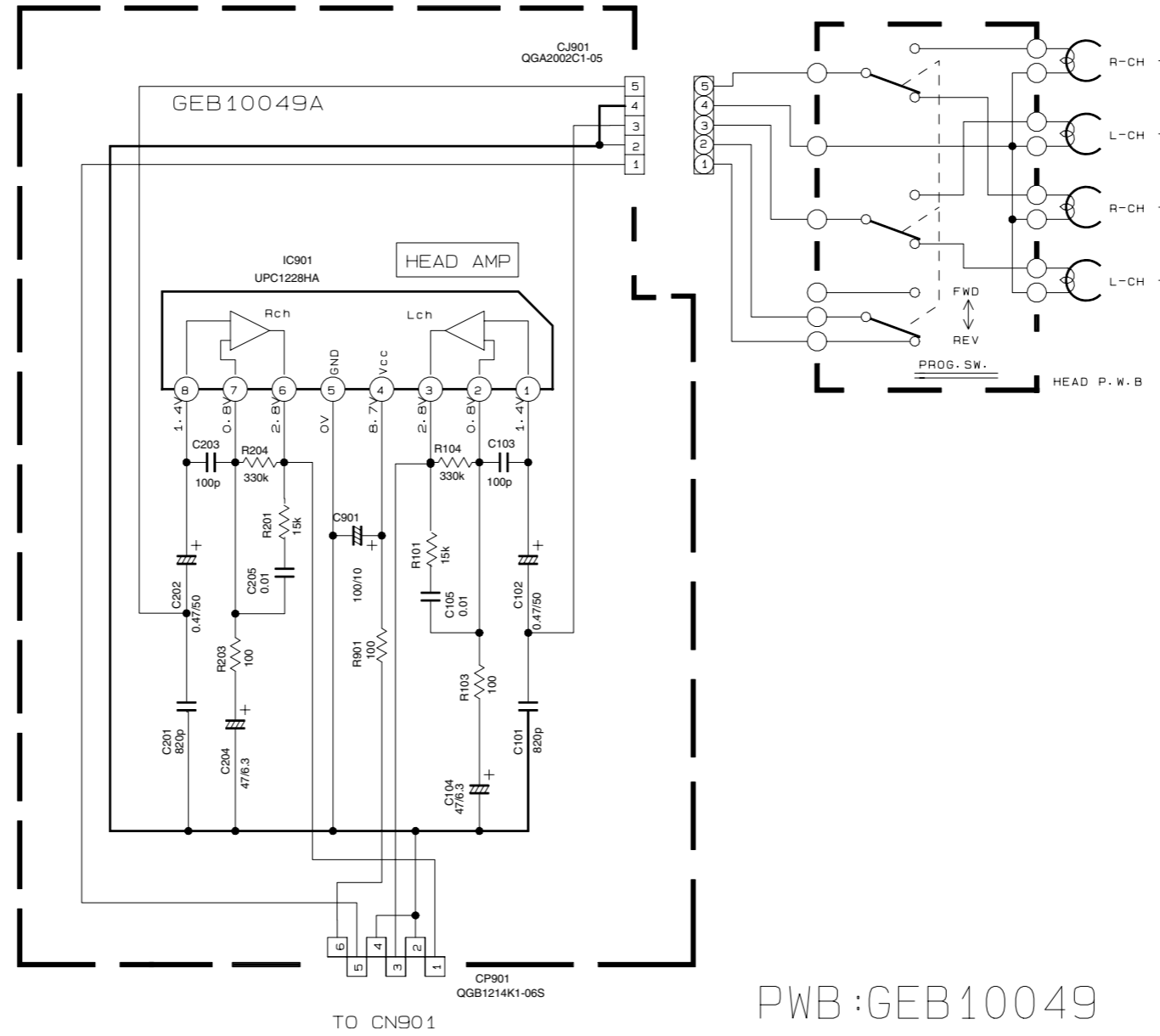


■ Head amplifier section



NOTES

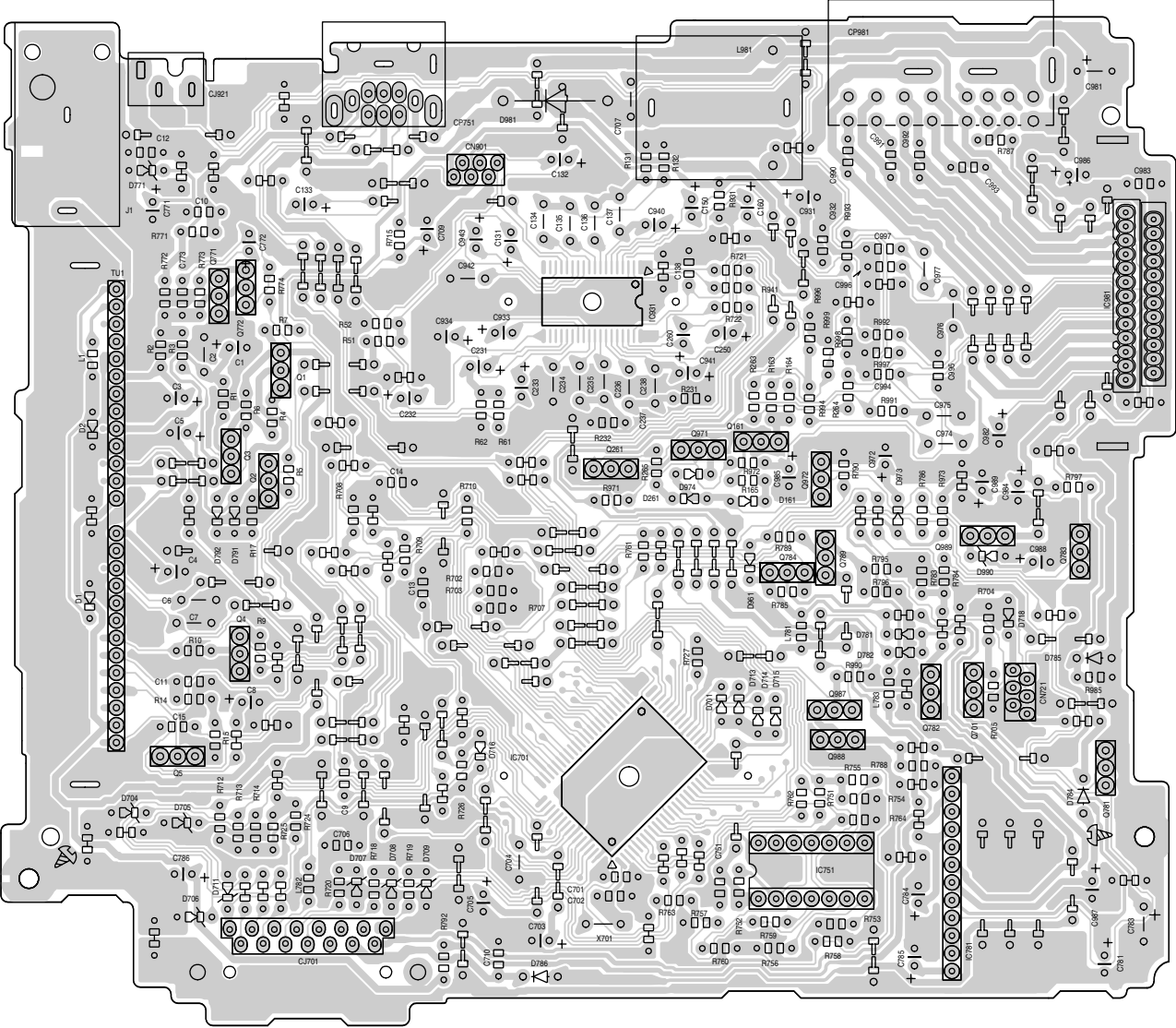
- VOLTAGES ARE DC-MEASURED WITH A DIGITAL VOLT METER WITHOUT INPUT SIGNAL.
CONDITION---FM MODE
- UNLESS OTHERWISE SPECIFIED.
ALL RESISTORS ARE 1/4W 5% CARBON RESISTOR OR 1/4W.1/10W 5% METAL GLAZE RESISTOR.
ALL CAPACITORS ARE 50V CERAMIC CAPACITOR.
ALL RESISTANCE VALUES ARE IN OHM(Ω).
ALL CAPACITANCE VALUES ARE IN uF(μ F).
ALL E. CAPACITORS ARE SHOW IN THE FORM OF CAPACITANCE (uF)/RATED VOLTAGE(V).



PWB:GEB10049

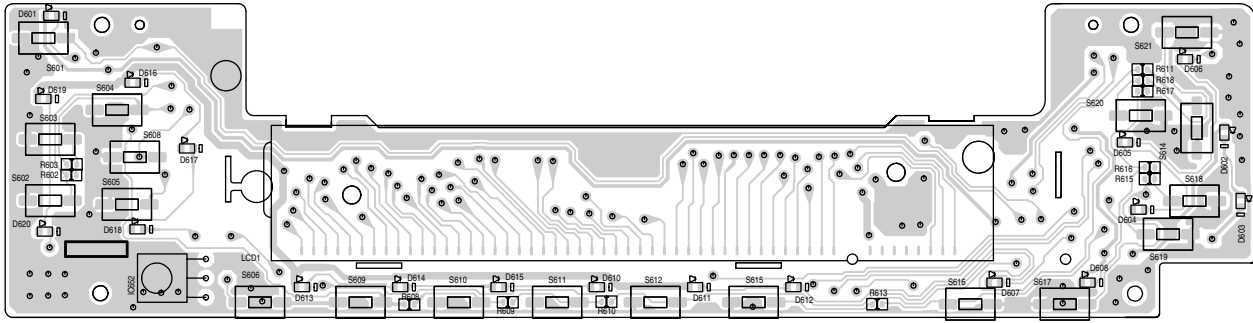
Printed circuit boards

■ Main board

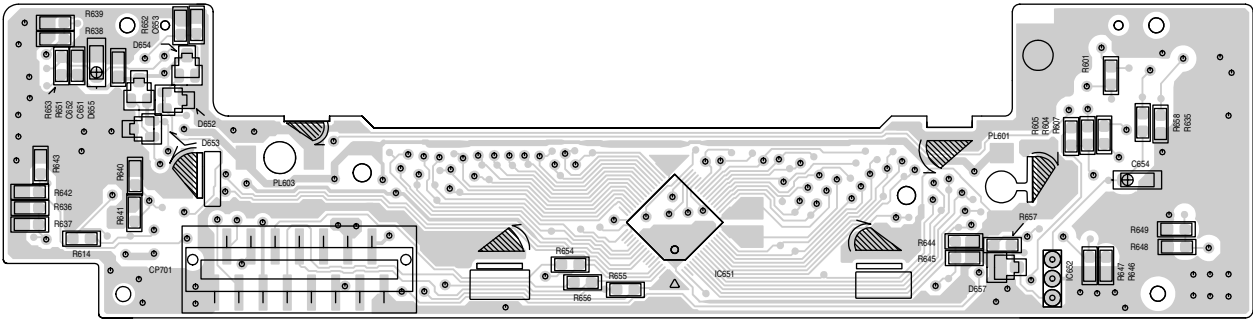


■ Front board

Forward side



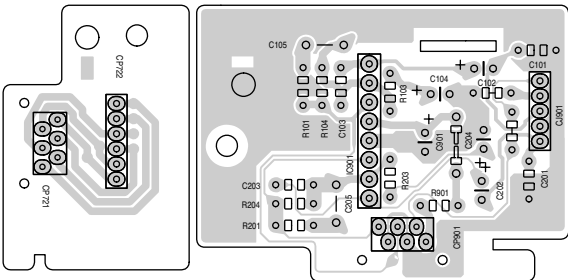
Reverse side



■ Mecha board

(Relay board)

(Head amplifier board)



< MEMO >

JVC

VICTOR COMPANY OF JAPAN, LIMITED

AV & MULTIMEDIA COMPANY MOBILE ENTERTAINMENT CATEGORY 10-1,1chome,Ohwatari-machi,Maebashi-city,371-8543,Japan

(No.MA007SCH)



Printed in Japan
WPC